

SCHÜCO



SCHÜCO AD UP 90  
ALUMINUM ENTRANCE DOOR SYSTEM

# SCHÜCO AD UP 90/ AD UP 90.SI

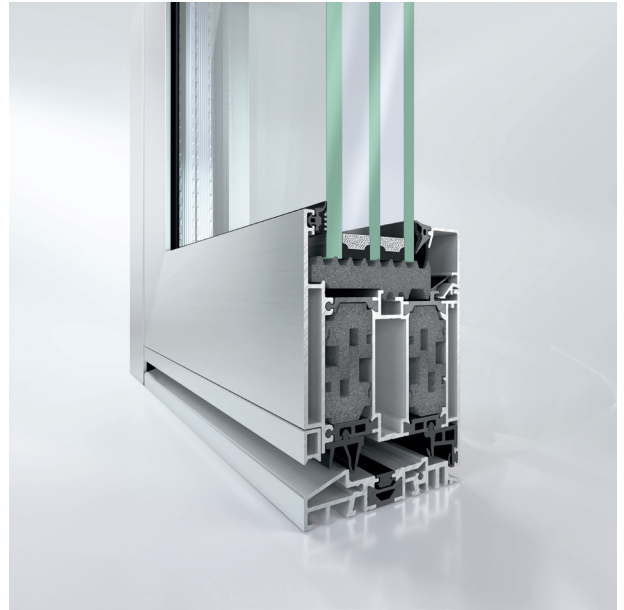


Schüco Entrance Door AD UP 90

For the perfect solution for door constructions with the most demanding of requirements for thermal insulation and weather tightness combined with maximum stability, look no further than the Schüco AD UP 90 and passive house level AD UP 90.SI aluminum entrance door systems.

With a continuous double center gasket and glazing rebate insulation fitted as standard, the Schüco AD UP 90 achieves low U-values. Furthermore, it boasts outstanding system properties in terms of air and weather tightness as well as resistance to wind load. With its inner, outer and central shell, the profile construction is identical to the Schüco AD UP 75.

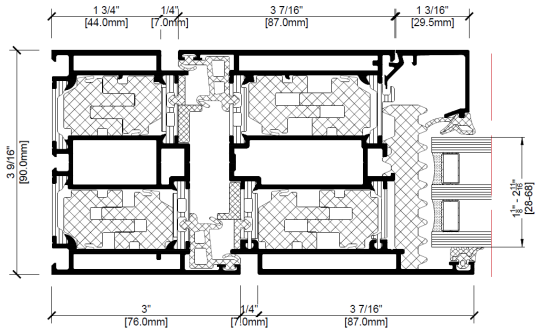
The simple use of foam inserts turns AD UP 90 into AD UP 90.SI to achieve passive house level. By using additional insulating shells, the highly thermally insulated door can be fabricated without the additional work required previously.



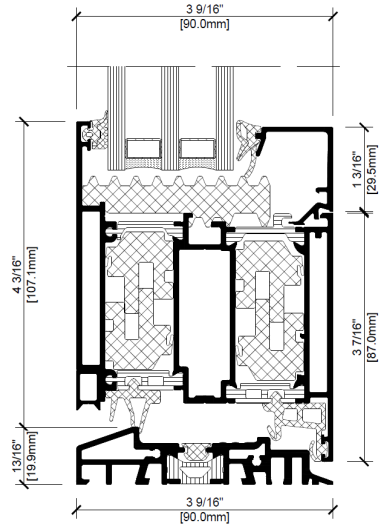
Schüco Entrance Door AD UP 90.SI

## PRODUCT BENEFITS

- Optional insulation zone with separate foam inserts enable maximal thermal insulation up to passive house level
- Double center gasket enables excellent insulation and weather tightness properties
- Hybrid split insulating bar to compensate for the bimetallic effect
- Barrel hinges, concealed door hinges or surface-mounted door hinges can be used
- Door leaf with option of leaf-enclosing infill on one or both sides
- ADA zero level threshold automatic door seal
- Continuous threshold and adjustable sill options
- Symmetrical profile composition for identical fabrication principles across all systems and basic depths
- High frame and unit stability with central fittings installation, concealed unit fixing and integrated support frame anchor
- High system stability in conjunction with tolerance-forgiving system and joint dimensions for reliable, straightforward fabrication



Detail of Schüco AD UP 90.SI jamb



Detail of Schüco AD UP 90.SI sill

TECHNICAL DATA		AD UP 90.SI	
		Single, Single with fixed lite(s), Double, Double with fixed lite(s)	
Variants			
Maximum Vent Dimensions (Single Door)	55-1/8" x 118-1/8" (1400 mm x 3000 mm)		
Maximum Vent Weight	Up to 441 lb (200 kg) depending on vent size		
Water Penetration (Single Door)	2.92 (140 Pa), without drip bar 4.59 (220 Pa), with drip bar		
AAMA Rating (Single Door)	CW-PG 30		
Hardware	Exposed barrel hinge, single point locking, multiple point locking, door pulls		
Accessories	Door closer, 10" Bottom Rail, Door Stop		
Thermal Example	Glass U-Value	Spacer Type	Overall U-Value
	0.29	TGI-M warm edge	0.29
	0.24	TGI-M warm edge	0.26
	0.16	TGI-M warm edge	0.21
	0.10	TGI-M warm edge	0.18

\*Information based on NFRC standard test size for entrance door (37-13/16" x 82-5/16" (960 mm x 2090 mm))

Are you planning a building project using Schüco systems or would like to in the future? **Contact us.**

Schüco develops and sells system solutions for windows, sliding doors and facades. In addition to innovative products for residential and commercial buildings, the building envelope specialist offers consultation and digital solutions for all phases of a building project – from the conceptual idea through final design onto fabrication and installation. Machinery for fabrication and a 360° cycle of sustainability complement the range of products and services.

With more than 6,750 employees worldwide, Schüco strives to be the industry leader in terms of technology and service today and in the future. To this end, the company is always developing and testing new products and services for the entire building envelope, taking into account current market trends and standards. 40,000 architects, investors, developer, fabricators and glazing contractors around the world work together with Schüco. The company is active in more than 80 countries and achieved a turnover of 2.5 billion USD in 2022.

**Schüco USA LLLP**

240 Pane Road  
Newington, CT 06111  
Email: [info@schuco-usa.com](mailto:info@schuco-usa.com)  
Phone: +1 860.666.0505

[www.schuco-usa.com](http://www.schuco-usa.com)

