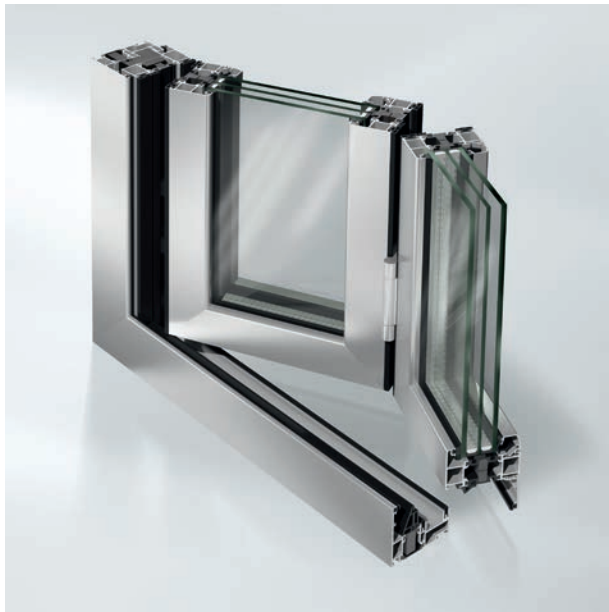




SCHÜCO

SCHÜCO ASS 70 FD / 80 FD.HI
ALUMINUM FOLDING SLIDING SYSTEM

SCHÜCO ASS 70 FD / 80 FD.HI



Schüco Folding Sliding System ASS 70 FD



Schüco Folding Sliding System ASS 80 FD.HI

The Schüco Aluminum Folding Sliding Systems ASS 70 FD and ASS 80 FD.HI are available in the basic depth of 2-3/4" (70 mm) and 3-1/8" (80 mm). The systems offer additional design options thanks to the opening type with 90° corner, including a low profile, thermally insulated floor threshold. An elegant feature retaining catch with a corresponding flat door handle is also available as an additional option.

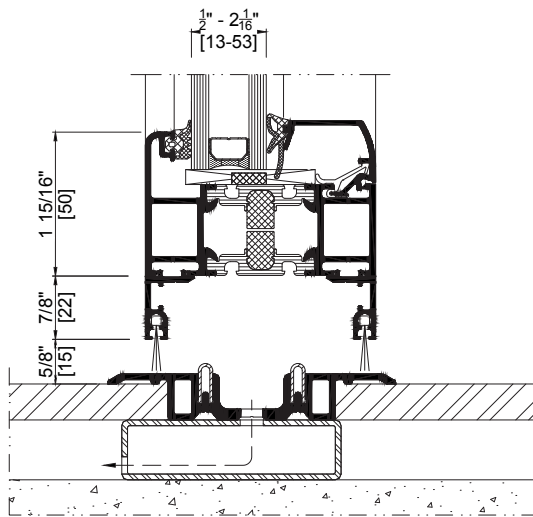
An integrated structural expansion profile allows compensation for ceiling deflections, which completes the folding systems. The ASS 70 FD/ 80 FD.HI are smooth and easy to operate which makes an impressive solution for commercial projects and luxury homes.

PRODUCT BENEFITS

- New low profile threshold with water tightness: for universal use, increased comfort and ease of access
- Additional opening type with 90° corner for more design freedom
- New magnetic retaining catch in an elegant design
- Customer-rolled profiles for a high degree of flexibility in large commercial project
- Wide range of colors: possible to use different colors on the inside and outside
- Screw-type corner cleats: simplified installation of the outer frame on site, saves costs particularly when transporting large units
- New structural expansion profile for height adjustment
- Units can be folded to the right, left, inwards or outwards, as required



Schüco Folding Sliding System ASS 80 FD.HI



Detail of Schüco Folding System ASS 80 FD.HI

TECHNICAL DATA ASS 80 FD.HI

Variants	Inward and outward opening
Maximum Vent Dimensions	47" x 118" (1200 mm x 3000 mm)
Glass Thickness	Up to 2-1/4" (57 mm)
Maximum Weight	220 lb (100 kg)
Water Tightness	4.6 psf (220 Pa), with subsill
Thermal Example*	0.34 Btu/hr-ft ² /-°F

*Information based on NFRC standard size with a TGI wave spacer, IGU U Value 0.29

Are you planning a building project using Schüco systems or would like to in the future? **Contact us.**

Schüco develops and sells system solutions for windows, sliding doors and facades. In addition to innovative products for residential and commercial buildings, the building envelope specialist offers consultation and digital solutions for all phases of a building project – from the conceptual idea through final design onto fabrication and installation. Machinery for fabrication and a 360° cycle of sustainability complement the range of products and services.

With more than 4900 employees worldwide, Schüco strives to be the industry leader in terms of technology and service today and in the future. To this end, the company is always developing and testing new products and services for the entire building envelope, taking into account current market trends and standards. 12,000 fabricators, developers, architects and investors around the world work together with Schüco. The company is active in more than 80 countries and achieved a turnover of 1.75 billion USD in 2017.

Schüco USA LLLP

240 Pane Road
Newington, CT 06111
Email: info@schuco-usa.com
Phone: +1 860.666.0505

www.schuco-usa.com

